

A shared reference library on *in silico* models related to food digestion

You may click on any of the following links, or go to

[https://www.zotero.org/groups/2309601/in\\_silico\\_models\\_of\\_food\\_digestion/items](https://www.zotero.org/groups/2309601/in_silico_models_of_food_digestion/items)

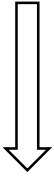


## Mouth

- [Breakdown of solid foods](#)
- [Saliva incorporation](#)
- [Starch hydrolysis](#)

### See also:

- [Multicompartement models](#)
- [Reviews on food digestion models](#)



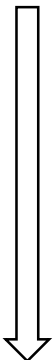
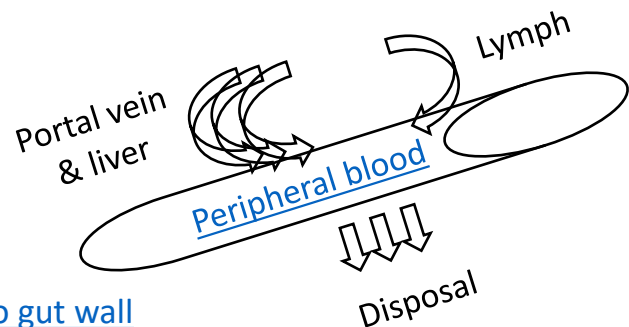
## Stomach

- [Breakdown and sieving of solid foods](#)
- [Secretions and mixing of gastric fluid](#)
- [pH and Buffering capacity of the food](#)
- [Enzyme and HCl diffusion](#)
- [Starch hydrolysis for pH  \$\geq 3,5\$](#)
- [Protein hydrolysis for pH  \$\leq 4,5\$](#)
- [Lipid hydrolysis in pH range  \$\sim 3-6\$](#)
- [Gastric emptying](#)



## Small intestine

- [Secretions and mixing of pancreatic and bile fluids](#)
- [Transit](#)
- [Fluid and enzyme diffusion](#)
- [Starch hydrolysis](#)
- [Protein hydrolysis](#)
- [Lipid hydrolysis](#)
- [Transport to and diffusion into gut wall](#)
- [Absorption of  \$\sim 90-95\%\$  of nutrients](#)

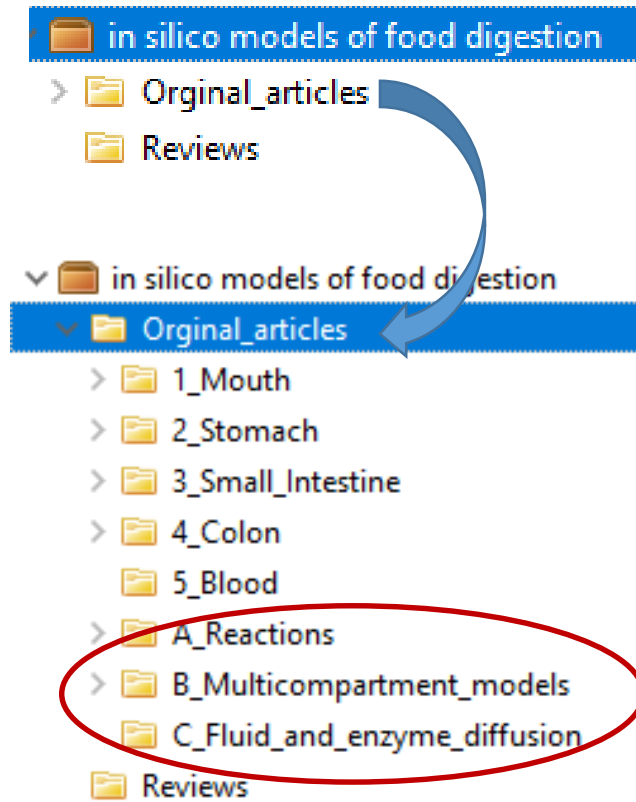


## Large intestine

- [Transit](#)
- [Water absorption](#)
- [Fermentation of unabsorbed nutrients + fibers](#)

## Structure of the shared library (Zotero public group = no file sharing, only references)

### General structure



Common to several compartments

### Detailed structure

